



www.gatewayquiltersguild.org

Gateway Quilters' Guild

Merced, CA

President's Message:

Dear Quilters,

First, I wish to apologize for the delay in delivering this issue. I take full responsibility for its' lateness. The Board has spent a great deal of time fine-tuning the proposed budget and candidates for office, and it was difficult to meet deadline. I hope my faux pas has not created too great an inconvenience for any of you.

This will be my last message to you as your guild president. It's been a great honor for me to serve as your leader in the past several months. It's been quite a year, hasn't it? We've lost dear ones and added new family; old friends are gone and new ones have come on board; we've created beautiful quilts and projects and hit design roadblocks; we enjoyed perfect weather and companionship for our June airing; seen changes in our meeting format (as well as the arrangement of our meeting place!); we attended great workshops and quilt shows; we saw an exciting new direction taken by our Quilters' Embrace group; many of us have had some major health issues to deal with, while others have been given a clean bill of health! And these are just a few of the many things that happened in 2008/2009!

We are facing challenging times ahead in our community, state, and nation. But we who appreciate our quilting heritage know about creating and conserving, preparing and preserving. Because of this, I believe we will make it through with grace and heads held high. We are quilters and artists, and we are made of sturdy stuff!

This month you will be electing a new slate of leadership who will see you through our biennial quilt show in October. My first opportunity to 'work' at the show was in 2007 and I was so very impressed with the machine-like precision our dedicated and faithful group of members employed in putting together this event. Yes, it was a lot of work, but we worked together and got it done. It was a success in more ways than just in the public's eye. We bonded, we laughed, we cried, we shared. What better environment could we have than being surrounded by quilts, beautiful fabrics, and wonderful friends? I look forward to all that is ahead in the 2009/2010 year—mostly because of all of you.

Thank you, everyone, for your willing to help and loyal support during this past year.

Quilting Hugz and Blessings!

Robyn

2009/2010 Slate of Officers

The February Guild meeting will include elections for the officers for next year. The Nominating Committee has been busy and submits the following slate of officers for your approval. There will also be an opportunity at the meeting for additional nominations from the floor. Thank you to the Nominating Committee for all your hard work. This was no easy task!

PRESIDENT—*Kathy Cavanaugh*

PRESIDENT-ELECT—*Karen Mous*

SECRETARY—*Judith Dake*

TREASURER—*Megan Anderson*

COORDINATOR OF MEMBER SERVICES—*Janetta Gibson*

COORDINATOR OF PROGRAM SERVICES—*Daphne Drewes*

COORDINATOR OF INFORMATION SERVICES—*Robyn Porter*

CHAIRMAN OF THE BIENNIAL SHOW—*Priscilla Hise*

OPPORTUNITY QUILT COORDINATOR—*Virginia Wagner*

NOTE: The proposed budget for the 2009/2010 year can be found on Page 3 for your review.

Meetings

When:

Third Monday of each month

Where:

Sierra Presbyterian Church
603 M St. Merced (corner of M and Yosemite Ave) in
Merced, CA

Time:

6:45 pm-7:15 p.m.—Time for purchasing library tickets, handling membership items, etc.

7:15 p.m.—General meeting called to order

Directory Changes

Please make additions of new members or changes to current ones to your Guild Directory:

Member: Carolyn Ridgway
Address: 3186 Leaf Drive Merced, CA 95340
Phone: 723-3837
Birthday: 6/17
E-mail: ridgways@mindspring.com

If you have changes or additions, please contact Janetta Gibson at 722-7967 or e-mail her at membership@gatewayquiltersguild.org

Guild Programs

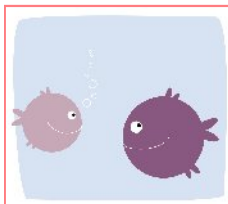
In **February** we will be sharing our heritage quilts. Many of our members have old quilts they have either inherited from family or have purchased. This is an opportunity to share these treasures with others and learn something about old quilts.

In **March**, the installation of our new officers for the 2009-2010 year will be the highlight of the evening. You won't want to miss a minute!

2009 Quilt Show News

Red Alert!! And this is No Red Herring!

Time is running out! Be sure to sign up for what you would like to do at the Quilt Show or I'll hunt you down and volunteer you!



We also need volunteers to do demonstrations during the show.

Call Priscilla Hise #7223057

Membership Dues Due April 1!

To give you time to fill out your membership renewal form and submit it with your dues to the Membership Committee, please note the form is inserted in this issue for your convenience. If you have any questions, please call Janetta Gibson at 722-7967 or e-mail her at janettaj@att.net

GQG Events

Next General Meeting:

Monday, February 16—6:45 p.m. at Sierra Presbyterian Church

Next Board Meeting :

Monday, February 23— 7:00 p.m. at Kathy Cavanaugh's home

Calendar of Events

March 7-8— 10 to 5 and 10-4

Symphony of Color Quilt Show presented by San Francisco Quilters Guild.

Located at Concourse Exhibition Center, 635 8th Street at Brannan Street. (Muni: #19 Polk/freeway Accessible)

March 7-8, 10 to 5 and 10-4

Manteca Quilt Show

Located at the MRPS Hall, 133 North Grant, Manteca. Admission is \$7.00

They are having a "special anniversary opportunity drawing" where the winner and two of her guests will receive a private lesson with Alex Anderson - at her residence!

New Member Jingle



Getting to Know You

Getting to know you, getting to know all about you.

Getting to like you, getting to hope you like me.

Now that I've met you, just call me by my first name,
So we can all share our love of quilts.

Getting to know you, getting to feel free and easy.

When we're together, we will have yards of fun.

And you will notice suddenly I'm bright and yacky

Because of all the beautiful and new quilts I'm creating

with you

stitch by stitch!



QUILTERS EMBRACE REPORT

The goal for QE for 2009 is 200 quilts. Themed quilts and specific sizes will be delivered to specific agencies.

Following is a list of the themes and the delivery locations:

Children's themes - CPS and Mercy Hospital

Scrappy quilts - Nursing homes and/or others as appropriate.

Patriotic themes - the Veterans Hospital.
The Red Cross—like larger quilts (twin and full size).

Special Olympics - have three events per year (Valentines Day, August, and Halloween parties) and would like two quilts for each of these events.

The Lao Family and Salvation Army - will receive a once a year donation of quilts at Christmas.

All donations are dependent upon what we receive from you. If you would like your donated quilt to go to a specific organization, please put a removable note on the quilt and we will honor your request.

We will keep you posted on our monthly progress. We are trying to keep a base 'stash' of 30 quilts on hand in case of an emergency (and if this occurs, we may also ask that you too do a little extra in helping to replenish our stash).

We have two new long arm quilters joining our cause: Kara Middlebrooks and Terri Bray. Thank you, ladies!

Seven quilt kits were distributed in January. I hope you all will sew one at some point during the year. There is such satisfaction in using what has been given to us.

"When life gives you scraps, make a quilt!"



February Sew Day is around the corner. Details are on Page 4.

CORRECTION: In the January newsletter the distribution list entry for CPS should have been 22, not 12). So sorry for the boo-boo!

GATEWAY QUILTERS' GUILD Proposed Budget for 2009-2010

INCOME	
Dues	1,900.00
Challenge	
Library	250.00
Workshop	1,600.00
Show Income	13,025.00
Ad Income	50.00
Opportunity Quilt	4,000.00
Checking Interest	5.00
CD Interest	160.00
Other Income	450.00
Total Income	21,440.00
EXPENSES	
Membership Services:	
Membership booklet	460.00
Sunshine	80.00
New Member packets	175.00
Library	150.00
Scholarship	500.00
Program Services:	
Block of the Month	75.00
Programs	1,500.00
Workshops	2,250.00
Rental – Meetings	900.00
Rental – Workshops	600.00
Hospitality	75.00
Information Services:	
Newsletter	300.00
Website	75.00
Publicity	25.00
Historian	50.00
Quilt Show Committee:	
Harvest of Quilts Show	4,475.00
Opportunity Quilt Committee:	
Opportunity Quilt tickets	500.00
Opportunity Quilt exp. 2010/2011	400.00
Quilter's Embrace	550.00
Administration:	
NCQC Dues	40.00
Insurance	500.00
Rental – Storage unit	825.00
Other Administrative	1,410.00
Carry-over for 2010	5,525.00
Total Expenses	21,440.00

Contacts

President:

Robyn Porter 358-1299
president@gatewayquiltersguild.org

President-Elect:

Katherine Cavanaugh 383-7844
pres-elect@gatewayquiltersguild.org

Secretary:

Virginia Wagner 723-0817
secretary@gatewayquiltersguild.org

Treasurer:

Megan Anderson 722-7852
treasurer@gatewayquiltersguild.org

Programs:

Mary Kaplan 358-6876
 Daphne Drewes 829-9139
programs@gatewayquiltersguild.org

Newsletter:

Sara R Andra Martindale 357-1752
newsletter@gatewayquiltersguild.org

Website:

Dorothy Kielty 489-0621
webmaster@gatewayquiltersguild.org

Newsletter articles, information, and classified ads are due to the Newsletter Editor no later than the first of the month following the Executive Board meeting.

Happy Birthday!

March 2009

Tonya Chaves	7
Katie Tesone	10
Debbie Dunn	25
Lori Nelson	26



701 W Olive Ave.
 Merced, CA 95348

Dorothy Kielty, S.R.E.S., ePro, RCC

REALTOR®

Phone: 209-489-0621

Fax: 209-725-0423

E-mail: DKielty@GonellaRealty.com

Check out my local business directory on my website
www.DorothySellsMerced.com—do you know someone
 whose business belongs here?

February Sew Day

Please help us finish and/or sew quilts for Quilters Embrace.

Join us for a couple of hours or for the day. Fabric and quilt kits will be provided. We will be working on the preparation of bindings, backings, cutting borders for kits, and fleece preemie blankets as well as other cutting and sewing projects as needed.

Date: Saturday, February 21, 2009

Time: 10:00 a.m. – 5:00 p.m.

Location: Education Annex—Mercy Hospital (On the corner of Canal and 26th St.—right beside the 'old' hospital on M St).

Please bring: Sewing machine (extension cords/ plug in strips), rotary cutters, mats, rulers, scissors, thread, and any fabric you wish to donate (please label your mats, cutters, etc.)

Snacks, pizza, and beverages will be provided.

Any questions call Kimberly Sterry-Farnham at
 W: 725-2284, H:382-1385

Happy Valentines Day!





www.GatewayQuiltersGuild.org
GATEWAY QUILTERS' GUILD
P.O. BOX 3793
MERCED, CA 95340

CHECKLIST for February 16, 2009 :

- **Vintage Quilts**
- **Be prepared to vote for 2009/2010 officers and budget**
- **Name Tag**
- **Show and Tell**
- **Quilters' Embrace**
- **Volunteer Hours Tags**
- **Receipts for Guild expenses**
- **Finished "Please Do Not Touch" signs**

NOTES: